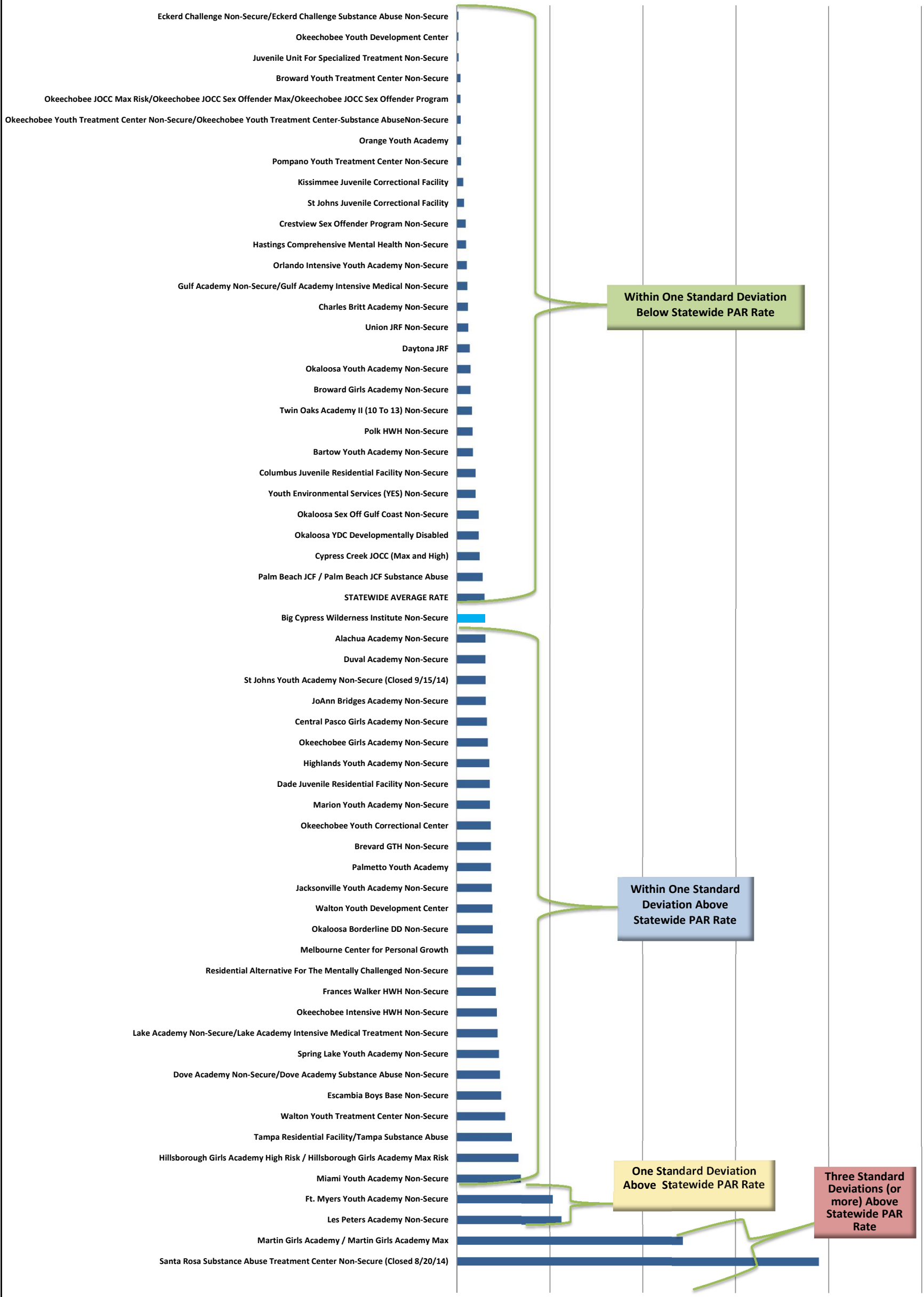




### Residential 12-month PAR Data (Level 2 and Level 3) for FY 2014-15 Performance Rankings

Low Rates

High Rates



Residential Program	12-mos. PAR Rate (FY2014-15)
Eckerd Challenge Non-Secure/Eckerd Challenge Substance Abuse Non-Secure	0.090
Okeechobee Youth Development Center	0.090
Juvenile Unit For Specialized Treatment Non-Secure	0.100
Broward Youth Treatment Center Non-Secure	0.200
Okeechobee JOCC Max Risk/Okeechobee JOCC Sex Offender Max/Okeechobee JOCC Sex Offender Program	0.200
Okeechobee Youth Treatment Center Non-Secure/Okeechobee Youth Treatment Center-Substance AbuseNon-Secure	0.210
Orange Youth Academy	0.230
Pompano Youth Treatment Center Non-Secure	0.230
Kissimmee Juvenile Correctional Facility	0.350
St Johns Juvenile Correctional Facility	0.390
Crestview Sex Offender Program Non-Secure	0.480
Hastings Comprehensive Mental Health Non-Secure	0.500
Orlando Intensive Youth Academy Non-Secure	0.540
Gulf Academy Non-Secure/Gulf Academy Intensive Medical Non-Secure	0.570
Charles Britt Academy Non-Secure	0.600
Union JRF Non-Secure	0.620
Daytona JRF	0.700
Okaloosa Youth Academy Non-Secure	0.740
Broward Girls Academy Non-Secure	0.740
Twin Oaks Academy II (10 To 13) Non-Secure	0.820
Polk HWH Non-Secure	0.850
Bartow Youth Academy Non-Secure	0.870
Columbus Juvenile Residential Facility Non-Secure	1.010
Youth Environmental Services (YES) Non-Secure	1.010
Okaloosa Sex Off Gulf Coast Non-Secure	1.180
Okaloosa YDC Developmentally Disabled	1.180
Cypress Creek JOCC (Max and High)	1.230
Palm Beach JCF / Palm Beach JCF Substance Abuse	1.390
<b>STATEWIDE AVERAGE RATE</b>	<b>1.495</b>
Big Cypress Wilderness Institute Non-Secure	1.510
Alachua Academy Non-Secure	1.550
Duval Academy Non-Secure	1.550
St Johns Youth Academy Non-Secure (Closed 9/15/14)	1.560
JoAnn Bridges Academy Non-Secure	1.570
Central Pasco Girls Academy Non-Secure	1.630
Okeechobee Girls Academy Non-Secure	1.680
Highlands Youth Academy Non-Secure	1.760
Dade Juvenile Residential Facility Non-Secure	1.780
Marion Youth Academy Non-Secure	1.790
Okeechobee Youth Correctional Center	1.830
Brevard GTH Non-Secure	1.840
Palmetto Youth Academy	1.840
Jacksonville Youth Academy Non-Secure	1.890
Walton Youth Development Center	1.920
Okaloosa Borderline DD Non-Secure	1.940
Melbourne Center for Personal Growth	1.970
Residential Alternative For The Mentally Challenged Non-Secure	1.970
Frances Walker HWH Non-Secure	2.110
Okeechobee Intensive HWH Non-Secure	2.160
Lake Academy Non-Secure/Lake Academy Intensive Medical Treatment Non-Secure	2.200
Spring Lake Youth Academy Non-Secure	2.270
Dove Academy Non-Secure/Dove Academy Substance Abuse Non-Secure	2.330
Escambia Boys Base Non-Secure	2.390
Walton Youth Treatment Center Non-Secure	2.610
Tampa Residential Facility/Tampa Substance Abuse	2.960
Hillsborough Girls Academy High Risk / Hillsborough Girls Academy Max Risk	3.320
Miami Youth Academy Non-Secure	3.450
Ft. Myers Youth Academy Non-Secure	5.170
Les Peters Academy Non-Secure	5.640
Martin Girls Academy / Martin Girls Academy Max	12.180
Santa Rosa Substance Abuse Treatment Center Non-Secure (Closed 8/20/14)	19.480
Statewide Average	1.49
Standard Deviation (sd)	2.90
(2 x sd)	5.80
1 (sd) Below Statewide Average **	-1.41
2 (sd) Below Statewide Average**	-4.31
1 (sd) Above Statewide Average	4.39
2 (sd) Above Statewide Average	7.29
3 (sd) Above Statewide Average	10.19
Statewide Average	1.49
Standard Deviation (sd)	2.90
(2 x sd)	5.80
Within 1 (sd) Below Statewide Average Range	0 - 1.485
Within 1 (sd) Above Statewide Average Range	1.505-4.39
1 (sd) Below Statewide Average Range	n/a
2 (sd) Below Statewide Average Range**	n/a
3 (sd) Below Statewide Average	n/a
1 (sd) Above Statewide Average Range	4.40-7.29
2 (sd) Above Statewide Average Range	7.30-10.19
3 (sd) (or more) Above Statewide Average Range	10.20 and above